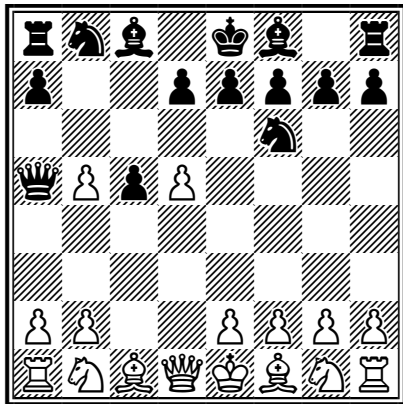
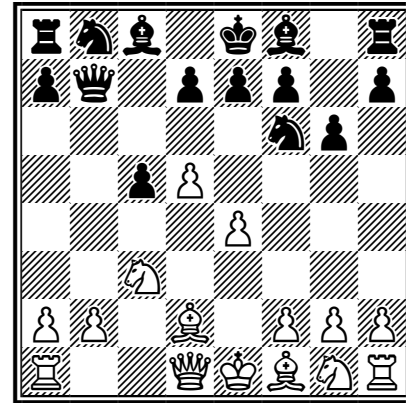


# Fayetteville Countergambit

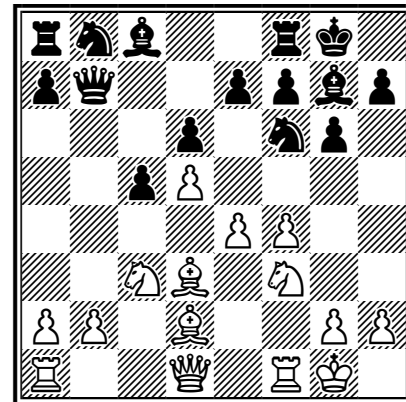
## A System for Black vs. 1. d4

(A43 Old Benoni Defense)

- 1 d4 ♘f6
- 2 c4 c5
- 3 d5 b5
- 4 cxb5 ♖a5+



(7 ... d6 =; 7 ... e5; 7 ... e6) 8 f4 ♘g7 9 ♗f3 O-O 10 ♘d3 d6 11 O-O =

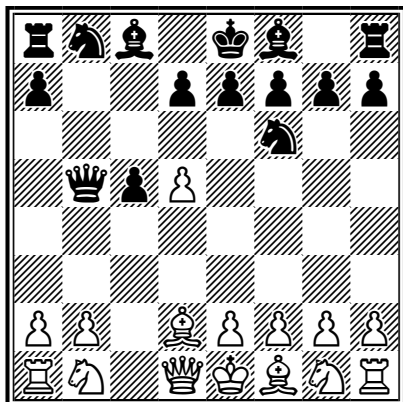


This move makes it the Fayetteville Countergambit.

- 5 ♗c3

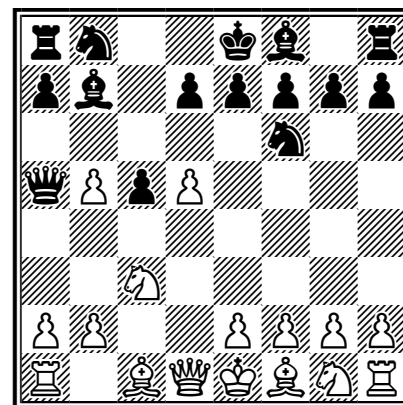
The alternative seems to give black the pawn back with a good game.

- 5 ♘d2 ♖xb5



- 6 ♗c3 (6 ♘c3 ♗e4 7 e3 ♖b6; 6 e4 ♖xb2)
- 6 ... ♖b7 7 e4 g6

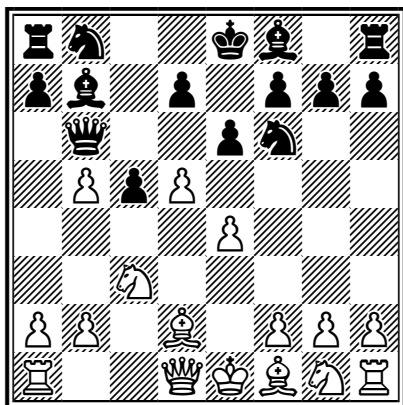
- 5 ... ♗b7



- 5 ... a6!? 6 bxa6 (6 ♘d2 axb5 7 e4 b4 8 e5 bxc3 9 ♘xc3 ♖a4 10 ♖xa4 ♗xa4 11 exf6 gxf6 =/+)
- 6 ... ♗xa6 (6 ... ♘xa6 7 ♘d2 (7 g3 d6 8 ♘g2 g6 9 ♗f3 ♘g7 10 ♗d2 ♗bd7) 7 ... d6 8 ♗e4 ♖b6 9 ♗xf6+ exf6 10 ♘c3 ♗d7 11 f4 g6 12 ♗f3 ♘g7 13 ♗d2 O-O) 7 ♘d2 g6! 8 e4 (8 ♗e4 ♖b6

9  $\text{Qxf6+}$   $\text{exf6}$  10  $\text{Sc3}$   $\text{Sg7}$  11  $\text{e4}$  O-O = Petty -  
Orton, Fort Smith 2016) 8 ...  $\text{d6}$  9  $\text{Qf3}$   $\text{Sg7}$

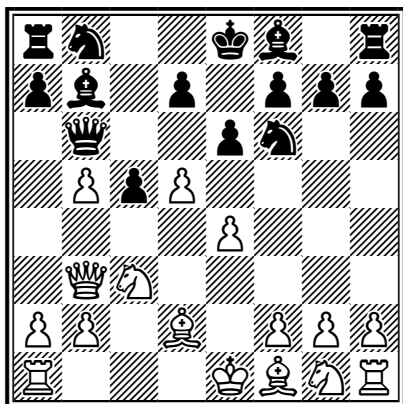
6  $\text{Scd2}$   $\text{Qb6}$   
7  $\text{e4}$   $\text{e6}$



This is the critical position. Black pressures the center like a Blumenfeld rather than fianchettoing his king bishop.

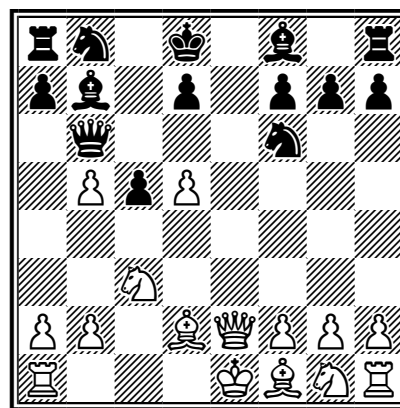
8  $\text{Sc4}$

8  $\text{Qb3}$

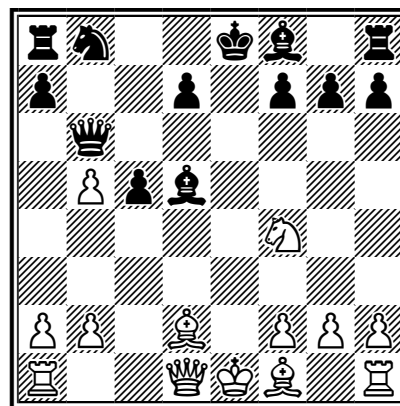


8 ...  $\text{exd5}$  (8 ...  $\text{g6!?$ ) 9  $\text{Qxd5}$  (9  $\text{exd5}$   $\text{Sd6}$   
10  $\text{Qf3}$  O-O) 9 ...  $\text{Qxd5}$  10  $\text{exd5}$   $\text{a6}$   
(10 ...  $\text{Se7}$ ) 11  $\text{Sc4}$  +/-;

8  $\text{Qe2}$   $\text{exd5}$  (8 ...  $\text{a6}$ ) 9  $\text{exd5+}$   $\text{Qd8}$  +/-

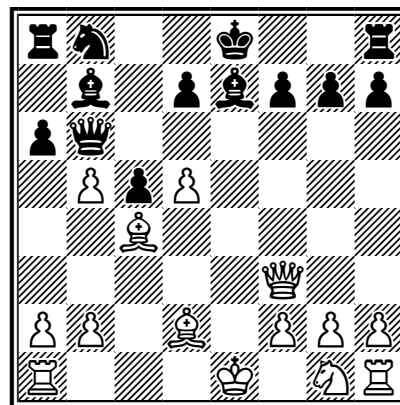


8  $\text{Qh3}$   $\text{exd5}$  (8 ...  $\text{a6}$ ) 9  $\text{Qxd5}$   $\text{Qxd5}$   
10  $\text{exd5}$   $\text{Sxd5}$  11  $\text{Qf4}$

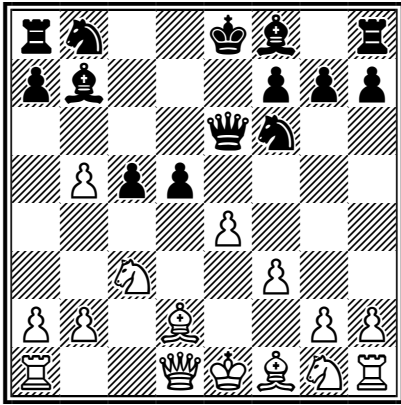


11 ...  $\text{Sb7}$  12  $\text{Qg4}$ ;

8  $\text{Qf3}$   $\text{exd5}$  9  $\text{Qxd5}$   $\text{Qxd5}$  10  $\text{exd5}$   $\text{Se7}$   
11  $\text{Sc4}$   $\text{a6}$  (oo)

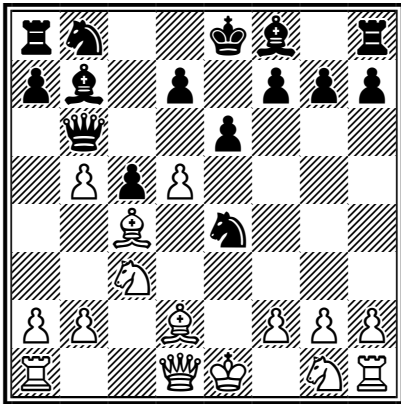


8  $\text{dxe6}$   $\text{Qxe6!}$  9  $\text{f3}$   $\text{d5}$  +/-



8 ♗g5 exd5 9 exd5 ♗e7 10 ♘f3

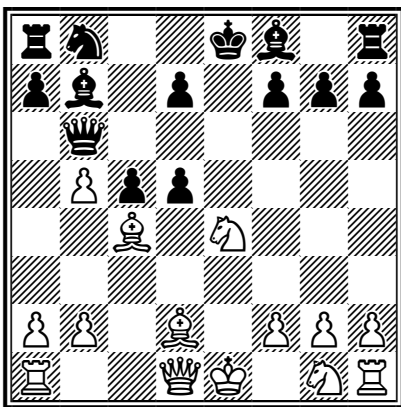
8 ... ♗xe4



9 ♗xe4

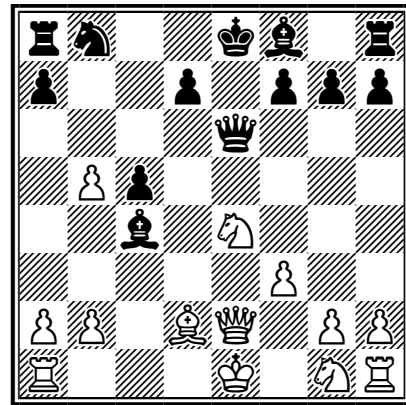
9 dxe6 dxe6 =

9 ... exd5

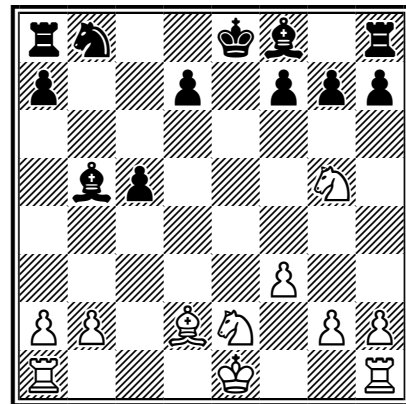


10 ♗xd5 ♗xd5

11 ♖e2 ♖e6  
12 f3 ♗c4



13 ♘g5 ♖xe2+  
14 ♘xe2 ♗xb5 -+



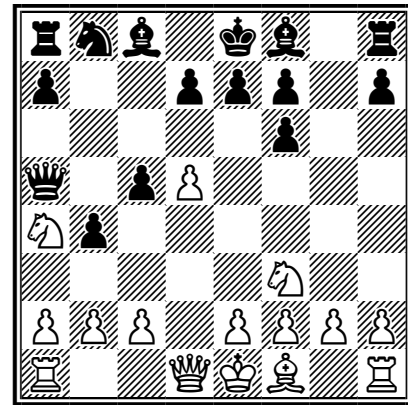
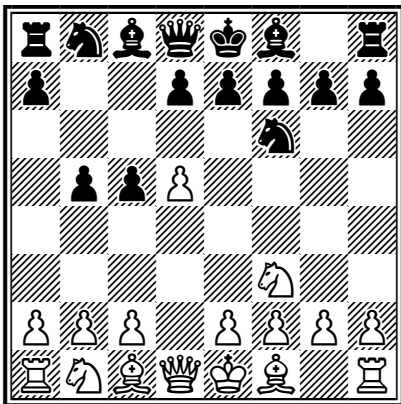
with a solid extra pawn. Kladiva - Rabovszky, 1995.

# The Ozarks Defense

## A System for Black vs. 1. d4

(A43 Old Benoni Defense)

- 1 d4      ♘f6  
 2 ♘f3      c5  
 3 d5      b5



- 8 b3

8 c4 f5 9 b3 ♙g7 10 ♚b1 d6 11 ♚c2 ♙d7 -/+;

8 c3 d6 9 a3 bxa3 10 ♚xa3 f5 11 e3 ♘d7  
 12 ♙c4 ♚b8 =

- 8 ... f5  
 9 e3 ♙g7  
 10 ♚b1 d6 =/+  
 11 ♙c4

11 ♙d3

- 11 ... ♘d7  
 12 ♚d3 ♘b6  
 13 ♙b5+ ♙f8  
 14 ♘d2 ♚b8

The Ozarks Defense. Black tries to weaken white's d-pawn.

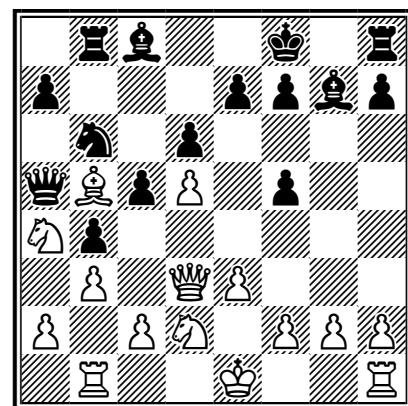
- 4 ♙g5      ♚b6!?

Also playable is 4 ... d6 5 ♙xf6 exf6

- 5 ♘c3

5 ♙xf6 ♚xf6 6 c3 d6 (6 ... ♘a6 7 e4 ♚b8 8 a4 b4 9 c4 ♘c7 (10 O-O); 6 ... e6 7 e4; 6 ... ♚b6!?)  
 7 e4 a6 8 ♘bd2 ♘d7 (8 ... g5) 9 g3 (9 ♚c2 g5)  
 9 ... g5 10 a4 b4 11 cxb4 cxb4 12 ♚c1 g4  
 13 ♚c2 ♘c5 =/+ Gruenfeld - Keres, Szczawno Zdroj 1950

- 5 ... b4  
 6 ♘a4 ♚a5  
 7 ♙xf6 gxf6



- 15 ♙c6      ♚g8  
 16 O-O      ♙f6 =/+

16 ... ♙a6 17 ♚xf5 ♙xf1 18 ♚xf1 h6 =

- 17 ♚fe1      ♚g6