



# Slav Defense - Smyslov System for Black

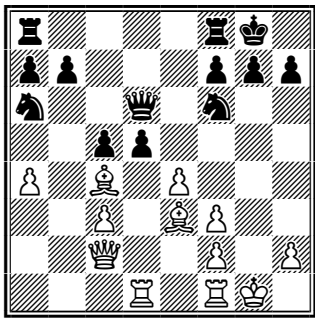


1 d4 d5 2 c4 c6 (with Smyslov's 5 ... ♖a6)

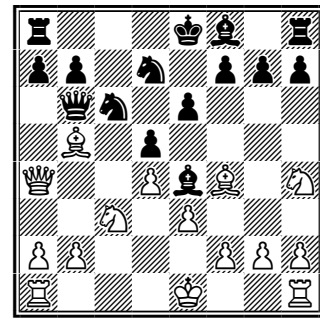
	3	4	5	6	7	8	9	10	11	12	13	14	
1	♗f3 ♗f6	♗c3 dxc4	a4 ♗a6	e4 ♗g4	♙xc4 e6	♙e3 ♙b4	♚c2 ♙xf3	gxf3 O-O	O-O c5	d5 ♙xc3	bxc3 exd5	♖ad1 ♚d6!?	(oo)
2	...	...	...	♗e5?! ♗g4	♗xc4 e5!	♗xe5 ♗xe5	dxe5 ♚xd1	♗xd1 ♙e6	e4 ♙b4	♙d2 O-O-O			=/+
3	...	...	e4 b5	e5 ♗d5	a4 ♙f5!?	axb5 ♗b4	♙xc4 ♗c2	♗e2 ♗a1	♚a4 ♗d7	♚a1 ♗b6	Geller Gambit		(oo)
4	...	...	e3 b5	a4 b4	♗a2 e6	♙xc4 ♙e7	O-O O-O	♚e2 ♙b7	♖d1 a5	♙d2 ♗bd7	Alekhine Variation △♚b6 and c5		=
5	...	cxd5 cxd5	♗c3 ♗c6	♙f4 ♙f5	e3 e6	♙b5 ♗d7	♚a4 ♚b6	♗h4 ♙e4			Exchange Var. I		=
6	...	...	...	...	...	♗e5 ♗xe5	♙b3 a6	b5			Exchange Var. II		=
7	♗c3 ♗f6	e3 a6	♗f3 b5	cxd5 cxd5	♗e5 e6	♙d3 ♗bd7	f4 ♙b7	O-O ♙e7	♙d2 O-O	♚f3 b4	Stolid Variation		=
8	...	♙g5 dxc4	a4 ♗a6	e4 ♗b4	♗f3 ♙g4	e5 ♙xf3	gxf3 ♗h5!	♙e3 e6	♙xc4 g6		Bishop's Variation △♗-g7-f5		=

In the main line, instead of playing 5 ... ♙f5, the Dutch Variation, we opt for Smyslov's 5 ... ♗a6. With this move the knight heads immediately for the weakened b4 square, keeping options open for developing the queen's bishop. It may go to g4 pinning white's knight, or even attempt to hold the extra pawn by going to e6. Black often tempts White to take the knight on a6. This would weaken black's pawns, but it would also give up the two bishops - usually more than enough compensation. The side variations are pretty standard "book" recommendations except for the risky exchange grab against the Geller Gambit. I hope you enjoy this quickie Slav System monograph.

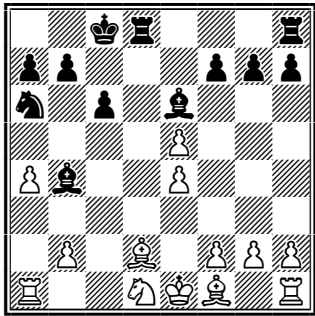
Hogeye Bill



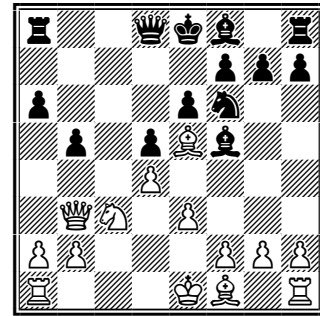
1 after 14 ... ♖d6!? (oo)



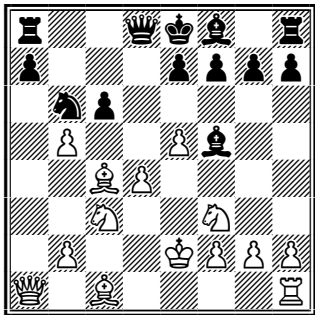
5 after 10 ... ♗e4 =



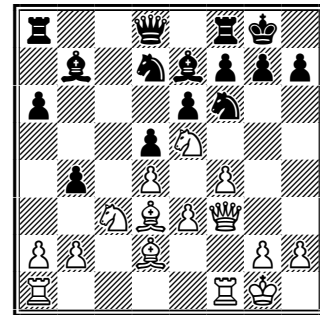
2 after 12 ... O-O-O =/+



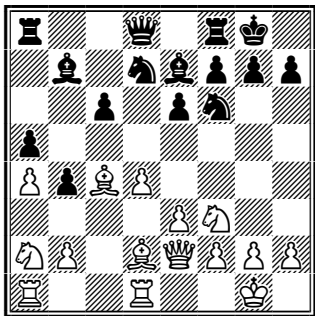
6 after 10 ... b5 =



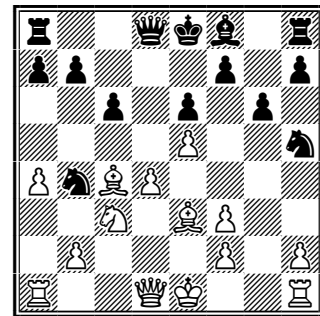
3 after 12 ... ♗b6 (oo)



7 after 12 ... b4 =



4 after 12 ... ♗bd7 =



8 after 11 ... g6 =

# Slav Defense

## System for Black

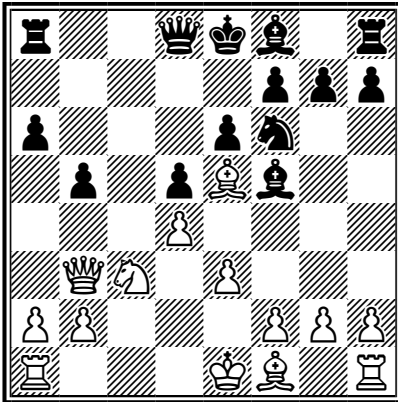
1 d4 d5  
2 c4 c6  
3 ♘c3

3 ♘f3 ♘f6 4 ♘c3 transposes;

### 3 cxd5 Exchange Variation

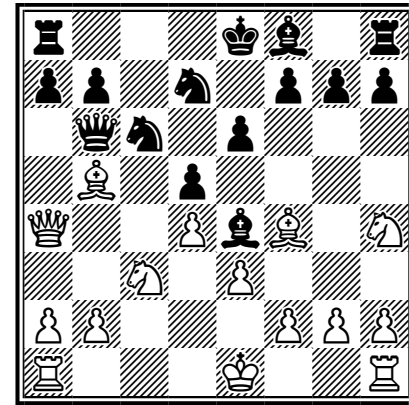
3 ... cxd5 4 ♘c3 ♘f6 5 ♘f3 ♘c6 6 ♖f4 ♖f5  
7 e3 e6 8 ♖b5

(8 ♘e5 ♘xe5 9 ♖xe5 a6 (9 ... ♘d7) 10 ♖b3 b5  
Ricardi,P (2380) - Gomez Baillo,J (2430), Buenos Aires: Najdorf (1) 1990 **Game 1**



8 ♖d3 ♖xd3 9 ♖xd3 ♖e7 (9 ... ♖d6 10 ♖xd6  
♖xd6 11 O-O O-O =) 10 O-O O-O 11 h3 ♖c8  
12 ♖fc1 a6)

8 ... ♘d7! 9 ♖a4 ♖b6 (9 ... ♖c8 10 O-O (10 ♖xc6  
♖xc6 11 ♖xa7 ♖c8 (11 ... ♖d3) 12 ♖a5 ♖a6)  
10 ... a6 11 ♖xc6 ♖xc6 12 ♖fc1 ♖e7)  
10 ♘h4 ♖e4



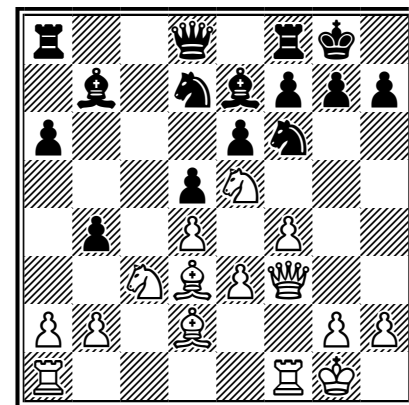
11 O-O-O

(11 f3?! ♖d3 -/+ 12 ♘xd5 ♖xb5 13 ♘xb6  
♖xa4 14 ♘xa8 ♘b4 15 ♖d2 ♖e7 (15 g4  
Chibukhchian,Artur - Malakhov,V, Cala Galdana 1996  
**Game 2**) 15 ... ♖e7 16 ♘c7+ ♖d8 17 ♖hc1  
g5! -/+)

11 ... ♖c8 12 f3 ♖g6 13 ♘xg6 hxg6 14 ♖b1  
a6 15 ♖e2 ♘a5 = Kask,E - Filen,H, 1986  
**Game 3**

3 ... ♘f6  
4 ♘f3

4 e3 **Stolid Variation** 4 ... a6 5 ♘f3 b5  
6 cxd5 cxd5 7 ♘e5 e6 8 ♖d3 ♘bd7 9 f4 ♖b7  
10 O-O ♖e7 11 ♖d2 O-O 12 ♖f3 (12 ♖c1)  
12 ... b4 =/+

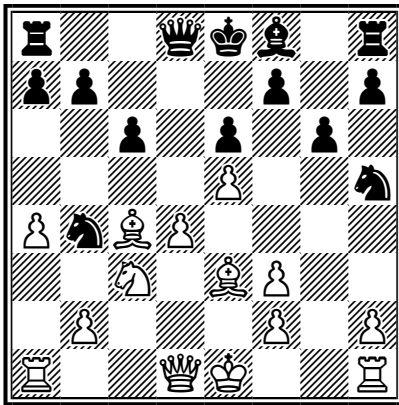


13 ♘a4 ♘e4 14 ♖e2

(14 ♖d1 ♜xe5 15 fxe5 ♙c6 16 ♙xe4 dxe4  
17 ♜c1 ♙b5 =/+ Karpov,A (2730) - Hort,V  
(2545), Biel (1) 1990 **Game 4** )

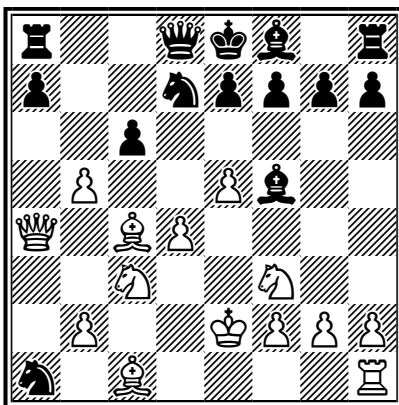
14 ... ♜xe5 15 fxe5 ♙c6 -/+ Mikhalchishin,A -  
Khmelnitsky, Sibenik (1) 1990 **Game 5**;

4 ♙g5 **Bishop's Variation** 4 ... dxc4  
5 a4 ♜a6 (5 ... ♖a5) 6 e4 ♜b4 7 ♜f3 ♙g4 8 e5  
♙xf3 (8 ... h6!? Clarke,T - Pheby,I, corr ch-GB club (1)  
1995 **Game 6**) 9 gxf3 ♜h5! 10 ♙e3 e6  
(10 ... ♜d3+!?) 11 ♙xc4 g6 =/+ with the idea of  
Knight to g7 to f5.



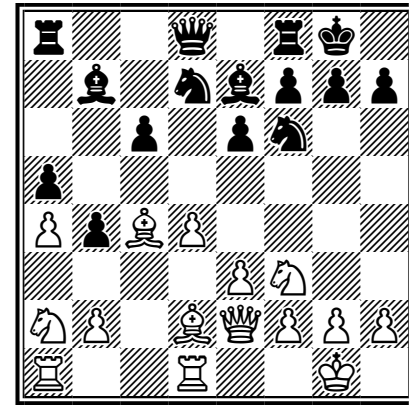
4 ... dxc4  
5 a4

5 e4 **Geller Gambit** 5 ... b5 6 e5 ♜d5  
7 a4 ♙f5 8 axb5 ♜b4 9 ♙xc4 ♜c2+ 10 ♙e2  
♜xa1 11 ♖a4 ♜d7



(11 ... ♙d7 Molander,Riku - Tahkavuori,Tapani, Jy-  
vaskyla HOF (1) 1996 **Game 7**) 12 ♖xa1 ♜b6  
13 ♙b3 cxb5 14 ♜xb5 ♙d7 15 ♜c3 e6;

5 e3 **Alekhine Variation** 5 ... b5 6 a4  
b4 7 ♜a2 (7 ♜b1 ♙a6 8 ♙e2 c5!) 7 ... e6 8 ♙xc4  
♙e7 9 O-O O-O 10 ♖e2 ♙b7 11 ♜d1 a5  
12 ♙d2 ♜bd7



13 ♜c1 ♖b6 14 ♜b3 c5 15 ♙e1  
Reshevsky,S - Smyslov,V, USA-URS radio (1)  
1945 **Game 8**

5 ... ♜a6

## Smyslov Variation

(5 ... ♙f5; 5 ... a5)

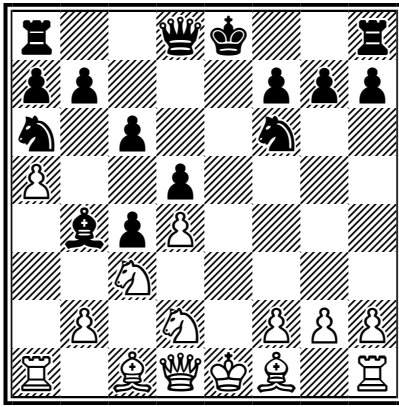
6 e4

6 e3 ♙e6!? (6 ... ♙g4) 7 a5

(7 ♜e5 c5 8 ♜xc4 cxd4 9 exd4 ♜b4 =;

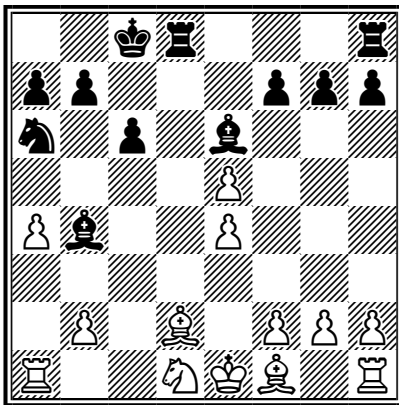
7 ♙e2 ♜b4 8 O-O g6 =)

7 ... ♙d5 8 ♜d2 e6!? (8 ... g6 9 e4 ♙e6 Karpov,A -  
Ljubojevic,L, Rotterdam 1989 **Game 9**) 9 e4 ♙b4  
10 exd5 exd5 with compensation for the piece



11 ♖e2+ (11 ♙e2 ♙xa5; 11 ♖a4 O-O 12 ♙e2 ♗e8)  
 11 ... ♗d7 12 ♘f3 ♗e8 13 ♘e5+ ♙c7 14 ♙f4  
 ♙d6;

6 ♘e5?! ♘g4! 7 ♘xc4 e5! 8 ♘xe5 ♘xe5  
 9 dxe5 ♖xd1+ =/+ 10 ♘xd1 (10 ♙xd1 ♙e6 -/+)  
 10 ... ♙e6 11 e4 ♙b4+ 12 ♙d2 O-O-O =/+  
 Ftacnik,L (2535) - Speelman,J (2575), Luzern  
 olm (1) 1982 **Game 10**



6 ... ♙g4

(6 ... ♙e6!? is a greedy alternative.)

7 ♙xc4

7 ♙e3 e6 8 ♙xc4 ♙b4 transposes.

7 ... e6

7 ... ♙xf3 8 gxf3 e6 9 ♙e3 ♘b4 10 O-O a5  
 11 f4 ♙e7 12 ♙h1 O-O!

8 ♙e3 ♙b4  
 9 ♖c2

9 ♖d3 ♙xf3 10 gxf3 ♘c7 11 ♗g1 O-O!?  
 (11 ... ♘h5)

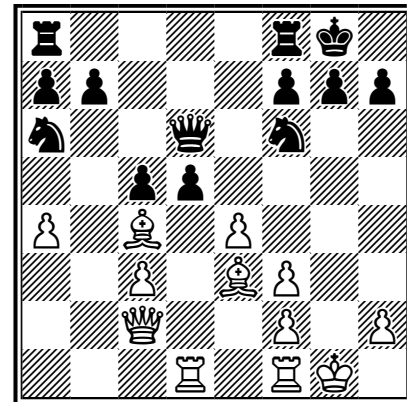
9 ... ♙xf3  
 10 gxf3 O-O  
 11 O-O

11 ♗g1 is also playable.

11 ... c5  
 12 d5 ♙xc3  
 13 bxc3 exd5  
 14 ♗ad1

14 ♗fd1 ♖d6!? (14 ... ♘c7 15 ♙xc5 ♗e8 16 ♙e3  
 ♗e5; 14 ... ♖c8? Hubner,R - Smyslov,V, Tilburg: Inter-  
 polis (1) 1979 **Game 11**)

14 ... ♖d6!? (oo)



(14 ... ♘c7 15 exd5 ♘d7 16 ♙e2! ♘e8! (better  
 than 16 ... ♖f6 as in Portisch,L - Nikolic,P, Brussel:  
 World Cup (1) 1988 **Game 12**))



## Illustrative Games



### Game 1

Ricardi,P (2380) - Gomez Baillo,J (2430)

Buenos Aires: Najdorf (1) 1990

(D14 Queen's G-D Slav, Exchange V, 6.Bf4 Bf5)

1 d4 d5 2 c4 c6 3 ♘f3 ♘f6 4 cxd5 cxd5 5 ♘c3  
 ♘c6 6 ♙f4 ♙f5 7 e3 e6 8 ♘e5 ♘xe5 9 ♙xe5  
 a6 10 ♖b3 b5 11 ♙xf6 gxf6 12 ♙e2 ♙d6  
 13 O-O ♖g8 14 ♖ac1 ♗f8 15 a4 b4 16 ♘a2  
 ♙h3 17 ♙f3 ♙f5 18 ♖c6 ♗g7 19 ♙e2 ♗h8  
 20 f4 ♖c8 21 ♖xc8 ♖xc8 22 ♙d3 ♙xd3  
 23 ♖xd3 ♖c4 24 ♘c1 ♖c8 25 ♖d1 ♖c2  
 26 ♖h5 ♖d2 27 ♘e2 ♖xe3+ 28 ♗h1 ♗g7  
 29 f5 ♖g5 30 ♖h3 exf5 31 ♖xf5 ♖c1+  
 32 ♘g1 ♖d2 33 ♖h4 ♙e7 34 ♖g3+ ♗f8  
 35 ♖b8+ ♗g7 36 ♖g3+ ♗f8 37 ♖b8+ ♗g7 1/  
 2

### Game 2

Chibukhchian,Artur - Malakhov,V

Cala Galdana WYCF b18 (1) 1996

(D14 Queen's G-D Slav, Exchange V, 6.Bf4 Bf5)

1 d4 d5 2 c4 c6 3 cxd5 cxd5 4 ♘c3 ♘c6 5 ♘f3  
 ♘f6 6 ♙f4 ♙f5 7 e3 e6 8 ♙b5 ♘d7 9 ♖a4  
 ♖b6 10 ♘h4 ♙e4 11 f3 ♙d3 12 ♘xd5 ♙xb5  
 13 ♘xb6 ♙xa4 14 ♘xa8 ♘b4 15 g4 ♙e7  
 16 ♘g2 O-O 17 ♘c7 ♘c2+ 18 ♗f2 ♘xa1  
 19 ♖xa1 ♖c8 20 ♖c1 e5 21 ♙g3 ♙d8 22 b3  
 ♙b5 23 a4 ♙a6 24 b4 b6 25 ♘xa6 ♖xc1  
 26 dxe5 ♖a1 27 b5 ♖xa4 28 e6 fxe6 29 ♘f4  
 ♗f7 30 ♘d3 ♖a5 31 ♘db4 ♖xb5 32 ♘c6  
 ♙f6 33 ♗e2 ♖b2+ 34 ♗d3 ♖a2 35 ♘cb4  
 ♖a3+ 36 ♗e4 ♙e7 37 ♙e1 ♙xb4 38 ♘xb4  
 ♘c5+ 39 ♗d4 ♖a4 40 ♗c3 ♖xb4 41 ♗xb4  
 ♘d3+ 0-1

### Game 3

Kask,E - Filen,H

corr Baltic tt (1) 1986

(D14 Queen's G-D Slav, Exchange V, 6.Bf4 Bf5)

1 d4 d5 2 c4 c6 3 cxd5 cxd5 4 ♘f3 ♘f6 5 ♘c3  
 ♘c6 6 ♙f4 ♙f5 7 e3 e6 8 ♙b5 ♘d7 9 ♖a4

♖b6 10 ♘h4 ♙e4 11 O-O-O ♖c8 12 f3 ♙g6  
 13 ♘xg6 hxg6 14 ♗b1 a6 15 ♙e2 ♘a5  
 16 ♖c1 ♘c4 17 ♙xc4 ♖xc4 18 ♖b3 1/2

### Game 4

Karpov,A (2730) - Hort,V (2545)

Biel (1) 1990-07-00

(D15 Queen's G-D Slav, 4.Nc3)

1 d4 d5 2 c4 c6 3 ♘f3 ♘f6 4 ♘c3 a6 5 e3 b5  
 6 cxb5 cxb5 7 ♙d3 ♙b7 8 O-O e6 9 ♘e5  
 ♘bd7 10 f4 ♙e7 11 ♙d2 O-O 12 ♖f3 b4  
 13 ♘a4 ♘e4 14 ♖d1 ♘xe5 15 fxe5 ♙c6  
 16 ♙xe4 dxe4 17 ♖c1 ♙b5 18 ♖f4 ♖c8  
 19 ♘c5 1/2

### Game 5

Mikhailchishin,A - Khmel'nitsky

Sibenik (1) 1990

(D15 Queen's G-D Slav, 4.Nc3)

1 d4 ♘f6 2 c4 c6 3 ♘c3 d5 4 e3 a6 5 ♘f3 b5  
 6 cxd5 cxd5 7 ♘e5 e6 8 ♙d3 ♙b7 9 O-O  
 ♘bd7 10 f4 ♙e7 11 ♙d2 O-O 12 ♖f3 b4  
 13 ♘a4 ♘e4 14 ♖e2 ♘xe5 15 fxe5 ♙c6  
 16 b3 ♙b5 17 ♖fc1 ♖a5 18 ♘b2 ♙xd3  
 19 ♖xd3 ♖b5 20 ♖c2 ♙g5 21 ♖xb5 axb5  
 22 ♘d1 ♘xd2 23 ♖xd2 ♖fc8 24 ♗f2 h5  
 25 ♗e2 ♗f8 26 ♖b1 ♗e7 27 ♘f2 ♖c3  
 28 ♘d1 ♖c7 29 ♘f2 f6 30 ♘d3 ♖c3 31 exf6+  
 gxf6 32 ♖f1 ♖g8 33 ♖f3 ♙h6 34 g3 ♖g4  
 35 ♘f2 ♖e4 36 ♘d1 ♖c1 37 ♘f2 ♙g5 38 h4  
 ♙h6 39 ♖d1 ♖c2+ 40 ♖d2 ♖c1 41 ♖d1  
 ♖c8 42 ♖d2 ♗f7 43 ♖d1 ♖c2+ 44 ♖d2 ♖c8  
 45 ♖d1 ♖c2+ 46 ♖d2 ♖c1 47 ♖d1 ♖xd1  
 48 ♘xd1 ♖g4 49 ♘f2 ♖g8 50 e4 ♖d8 51 e5  
 f5 52 ♘d3 ♖a8 53 ♘xb4 ♙f8 54 ♘c2 b4  
 55 ♘e1 ♖xa2+ 56 ♗d1 ♙h6 57 ♖d3 ♖a1+  
 58 ♗e2 ♖c1 59 ♘g2 ♖c2+ 60 ♗f3 ♙d2  
 61 ♘f4 ♙xf4 62 ♗xf4 ♗g6 63 ♗f3 ♖c1  
 64 ♗f2 ♖b1 65 ♗e2 ♖a1 66 ♗f2 ♖h1  
 67 ♗e2 ♖h2+ 68 ♗e3 ♖a2 69 ♗f3 ♖a1  
 70 ♗f2 ♖a2+ 71 ♗f3 ♖b2 72 ♗e3 ♖b1  
 73 ♗f2 f4 74 ♖f3 ♖b2+ 75 ♗g1 fxg3 76 ♖f6+  
 ♗g7 77 ♖xe6 ♖h2 78 ♖d6 ♖xh4 79 ♖xd5  
 ♖e4 80 e6 h4 81 ♖h5 ♖xd4 82 e7 ♗f7  
 83 ♖h7+ ♗e8 84 ♗g2 ♖g4 85 ♗g1 g2 0-1

## Game 6

Clarke,T - Pheby,I

corr ch-GB club (1) 1995

(D10 Queen's G-D Slav D)

1 d4 d5 2 c4 c6 3 ♘c3 ♘f6 4 ♙g5 dxc4 5 a4  
 ♘a6 6 e4 ♘b4 7 ♘f3 ♙g4 8 e5 h6 9 ♙e3  
 ♘fd5 10 ♙xc4 e6 11 O-O ♙e7 12 h3 ♙f5  
 13 ♘e1 ♙g5 14 ♘xd5 exd5 15 f4 ♙e7  
 16 ♙e2 O-O 17 a5 b6 18 axb6 axb6 19 ♙a3  
 c5 20 ♘d3 ♙xa3 21 bxa3 ♘xd3 22 ♙xd3  
 ♙xd3 23 ♙xd3 c4 24 ♙b1 ♙a8 25 f5 ♙xa3  
 26 ♙xh6 gxh6 27 ♙f3 ♙b4 28 ♙c1 ♙g5  
 29 ♙g3 c3 30 ♙xg5+ ♘h7 31 ♙g4 ♙b2 0-1

## Game 7

Molander,Riku - Tahkavuori,Tapani

Jyvaskyla HOF (1) 1996

(D15 Queen's G-D Slav, Tolush-Geller G)

1 d4 d5 2 c4 c6 3 ♘f3 ♘f6 4 ♘c3 dxc4 5 e4  
 b5 6 e5 ♘d5 7 a4 ♘b4 8 axb5 ♙f5 9 ♙xc4  
 ♘c2+ 10 ♘e2 ♘xa1 11 ♙a4 ♙d7 12 bxc6  
 ♘xc6 13 ♙xa1 e6 14 d5 exd5 15 ♘xd5 ♙e7  
 16 ♙d1 O-O 17 ♙a2 ♘h8 18 ♘f4 ♙e8  
 19 ♙e3 ♘b4 20 ♙a5 a6 21 ♘d4 ♘c6  
 22 ♘xc6 ♙xc6 23 ♘d5 ♙xd5 24 ♙xd5 ♙b8  
 25 ♙xa6 ♙xb2+ 26 ♘f1 ♙b5+ 27 ♙xb5  
 ♙xb5 28 f4 ♙d8 29 ♙f3 ♙xd1+ 30 ♙xd1  
 ♙c5 31 ♙e2 ♙b1+ 32 ♘f2 ♙xe3+ 33 ♘xe3  
 ♘g8 34 ♙f3 ♘f8 35 f5 ♘e7 36 ♘f4 ♙b4+  
 37 ♘g5 h6+ 38 ♘h5 ♙b5 39 f6+ gxf6  
 40 ♘xh6 fxe5 41 h4 ♙b4 42 h5 e4 43 ♙d1  
 ♙b2 44 g4 ♙d2 45 ♙b3 e3 46 ♙c4 ♘f8  
 47 ♘h7 e2 48 ♙xe2 ♙xe2 49 h6 ♙h2 50 g5  
 ♙h3 51 ♘h8 ♙h5 52 h7 ♘e7 53 ♘g7 ♙xg5+  
 0-1

## Game 8

Reshevsky,S - Smyslov,V

USA-URS radio (1) 1945

(D15 Queen's G-D Slav Accepted, 5.e3 (Alekhine V))

1 d4 d5 2 c4 c6 3 ♘f3 ♘f6 4 ♘c3 dxc4 5 e3  
 b5 6 a4 b4 7 ♘a2 e6 8 ♙xc4 ♙e7 9 O-O O-O  
 10 ♙e2 ♙b7 11 ♙d1 a5 12 ♙d2 ♘bd7  
 13 ♘c1 ♙b6 14 ♘b3 c5 15 ♙e1 ♙fd8  
 16 ♙b5 ♙d5 17 ♘bd2 ♙b7 18 ♘c4 ♘b6  
 19 ♘ce5 ♘e4 20 dxc5 ♘xc5 21 ♘d4 ♙dc8  
 22 f3 ♘b3 23 ♘xb3 ♙xb3 24 ♙d3 ♙c2

25 ♙d2 b3 26 ♙f2 ♙b4 27 ♙d4 ♘d5 28 ♘d3  
 e5 29 ♘xe5 ♙c3 30 ♘c4 ♙xd4 31 exd4 ♙c7  
 32 ♙g3 ♙a7 33 ♙e4 ♘b4 34 ♘d6 ♙f8  
 35 ♙e3 ♙ad8 36 ♙c3 ♙e7 37 ♙e1 ♙g5  
 38 ♙e3 ♙g6 39 ♘e4 ♙xe4 40 ♙xe4 ♘c2  
 41 ♙xg6 hxg6 42 ♙c1 ♘xd4 43 ♙c7 ♙d5  
 44 ♙c4 ♙c8 45 ♙a6 ♙e8 46 ♘f1 ♘c2  
 47 ♘g1 ♙e1+ 48 ♙xe1 ♘xe1 49 ♘f2 ♘c2  
 50 ♘e2 ♙c5 51 ♙g3 ♘b4 52 ♙d3 g5 53 ♙e4  
 ♙c4 54 ♙e1 ♘f8 55 ♙c3 f6 56 g4 ♘e7  
 57 ♘d2 ♘d6 58 ♘e2 ♘d5 59 ♙xa5 ♙xa4  
 60 ♙e1 ♙a2 61 ♘d3 ♙xb2 62 ♘c4 ♙e2  
 63 ♙g3+ ♘f4 64 ♘xb3 ♙xe4 65 fxe4 ♘e5  
 66 h4 ♘xe4 67 hxg5 fxg5 68 ♘c4 ♘f3  
 69 ♙e1 ♘xg4 70 ♘d4 ♘f3 71 ♘e5 g4 0-1

## Game 9

Karpov,A (2750) - Ljubojevic,L (2580)

Rotterdam: World Cup (1) 1989-06-00

(D16 Queen's G-D Slav Accepted, Alapin V)

1 d4 d5 2 c4 c6 3 ♘f3 ♘f6 4 ♘c3 dxc4 5 a4  
 ♘a6 6 e3 ♙e6 7 a5 ♙d5 7 ... ♘d5!? 8 ♘d2  
 g6 8 ... e6!? 9 e4 ♙b4 10 exd5 exd5 with  
 compensation for the piece 11 ♙e2+ (11 ♙e2  
 ♙xa5; 11 ♙a4 O-O 12 ♙e2 ♙e8) 11 ... ♘d7  
 12 ♘f3 ♙e8 13 ♘e5+ ♘c7 14 ♙f4 ♙d6 9 e4  
 ♙e6 10 ♘xc4 ♙g7 11 ♘e5 ♙c8 12 ♙a4 O-O  
 13 ♙e2 ♘d7 14 ♘d3 ♘c7 15 ♙e3 f5 16 e5  
 ♙f7 17 ♙d1 ♙e8 18 h4 h6 19 ♙f3 ♘h7  
 20 ♘f4 ♙b8 21 ♙c2 ♘g8 22 g4 e6 23 ♙g1  
 ♘h8 24 ♙d2 ♙d8 25 ♙e2 ♙e7 26 gxf5 gxf5  
 27 ♙h5 ♙g8 28 ♙g6 ♘f8 29 ♙h5 ♙d7  
 30 ♙d3 ♙e8 31 ♙d2 ♘xg6 32 ♘xg6+ ♘h7  
 33 ♙dg3 ♙xd4 34 ♙e2 ♙xg6 35 ♙xg6 ♙xg6  
 36 ♙xg6 ♘xg6 37 ♙e3 ♙xh4 38 f4 ♙d8  
 39 ♙f3 ♘d5 40 ♙xa7 ♙xf4 41 ♙d3 ♙xe5  
 42 ♘e2 ♙e4 43 ♘f2 ♙g8 44 ♙c2 ♘h7  
 45 ♘f3 ♙h4 46 ♙g1 ♙h3+ 47 ♘f2 ♙h2  
 48 ♙c5 ♙xg1+ 49 ♘xg1 ♙h2+ 50 ♘f3 e5  
 0-1

## Game 10

Ftacnik,L (2535) - Speelman,J (2575)

Luzern olm (1) 1982-10-00

(D16 Queen's G-D Slav Accepted, Alapin V)

1 d4 ♖f6 2 c4 c6 3 ♗c3 d5 4 ♗f3 dxc4 5 a4  
 ♗a6 6 ♗e5 ♗g4 7 ♗xc4 e5 8 ♗xe5 ♗xe5  
 9 dxe5 ♖xd1+ 10 ♗xd1 ♙e6 11 e4 ♙b4+  
 12 ♙d2 O-O-O 13 ♙xb4 ♗xb4 14 ♗e3 ♖d4  
 15 f3 ♖hd8 16 ♗f2 ♖d2+ 17 ♗g3 ♖8d4  
 18 ♖c1 ♖xb2 19 ♙c4 ♗d3 20 ♖hd1 ♗xc1  
 21 ♖xd4 ♗c7 22 ♖d1 ♗e2+ 23 ♗h4 ♗c3  
 24 ♖c1 ♗xa4 25 f4 ♙xc4 26 ♗xc4 ♖xg2  
 27 ♗h3 ♖e2 28 ♗d6 ♗b2 29 ♗g3 ♗d3  
 30 ♖b1 b5 31 ♖a1 ♗b6 32 ♗f3 ♖xh2  
 33 ♗xf7 ♗xf4 34 ♗g5 ♗g6 35 e6 a5 36 ♗f7  
 a4 37 ♗d6 ♖h3+ 38 ♗f2 ♖d3 39 ♗f5 ♖d8  
 40 ♗e3 ♖e8 41 ♗xg7 ♖e7 0-1

## Game 11

Hubner,R (2595) - Smyslov,V (2560)

Tilburg: Interpolis (1) 1979-11-00

(D16 Queen's G-D Slav, Smyslov V)

1 d4 d5 2 c4 c6 3 ♗c3 ♗f6 4 ♗f3 dxc4 5 a4  
 ♗a6 6 e4 ♙g4 7 ♙xc4 e6 8 ♙e3 ♙b4 9 ♖c2  
 ♙xf3 10 gxf3 O-O 11 O-O c5 12 d5 ♙xc3  
 13 bxc3 exd5 14 ♖fd1 ♖c8? (14 ... ♖d6!?)  
 15 exd5 ♖h3 16 ♖ab1 ♖xf3 17 ♙e2 ♖h3  
 18 ♖xb7 c4 19 ♙f1 ♖h5 20 ♖e2 ♖g6+  
 21 ♙g2 ♖ac8 22 d6 ♗c5 23 ♙xc5 ♖xc5  
 24 d7 ♖d5 25 ♖xd5 ♗xd5 26 ♖e4 ♗xc3  
 27 ♖xg6 hxg6 28 ♖c7 ♗e2+ 29 ♗f1 ♗f4  
 30 ♙d5 1-0

## Game 12

Portisch,L (2610) - Nikolic,P (2630)

Brussel: World Cup (1) 1988-04-00

(D16 Queen's G-D Slav, Smyslov V)

1 d4 d5 2 c4 c6 3 ♗f3 ♗f6 4 ♗c3 dxc4 5 a4  
 ♗a6 6 e4 ♙g4 7 ♙xc4 e6 8 ♙e3 ♙b4 9 ♖c2  
 ♙xf3 10 gxf3 O-O 11 O-O c5 12 d5 ♙xc3  
 13 bxc3 exd5 14 ♖ad1 ♗c7 15 exd5 ♗d7  
 16 ♙e2 ♖f6 17 ♗h1 ♗e8 18 ♖g1 g6 19 d6  
 ♖e5 20 f4 ♖f6 21 f5 ♗g7 22 ♙d3 ♖e5  
 23 ♖g5 c4 24 ♙xc4 ♗xf5 25 ♖xf5 ♖xf5  
 26 ♖xf5 gxf5 27 ♙d4 ♖fc8 28 ♖g1+ ♗f8  
 29 ♙d5 ♖ab8 30 ♖g7 1-0